



## K B CORPORATION



40 x 16 Feet - Kolkata



12 x 4 Feet - Colombo



27 x 12 Feet - Mumbai



18 x 6 Feet - Mumbai



20 x 10 Feet - Bhubaneswar



20 x 10 Feet - Bhopal

India's largest TRIVISION manufacturer



16 x 8 Ft. - Mumbai



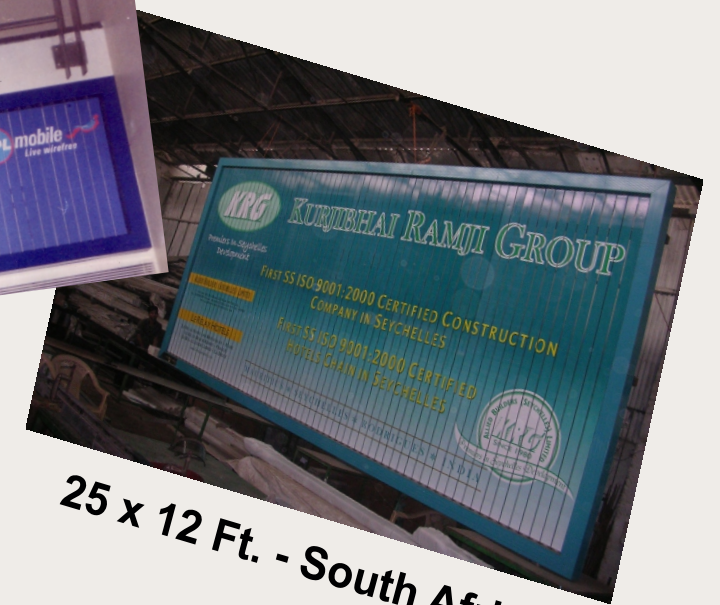
12 x 4 Ft. - Goa



15 x 5 Ft. - Mumbai



12 x 4 Ft. - Pune



25 x 12 Ft. - South Africa



8 x 8 Ft. - Mumbai



3 Faces of 20 x 15 Ft. at Nariman Point, Mumbai.



10 x 7 Ft. - Mumbai



14 x 4 Ft. - Amritsar



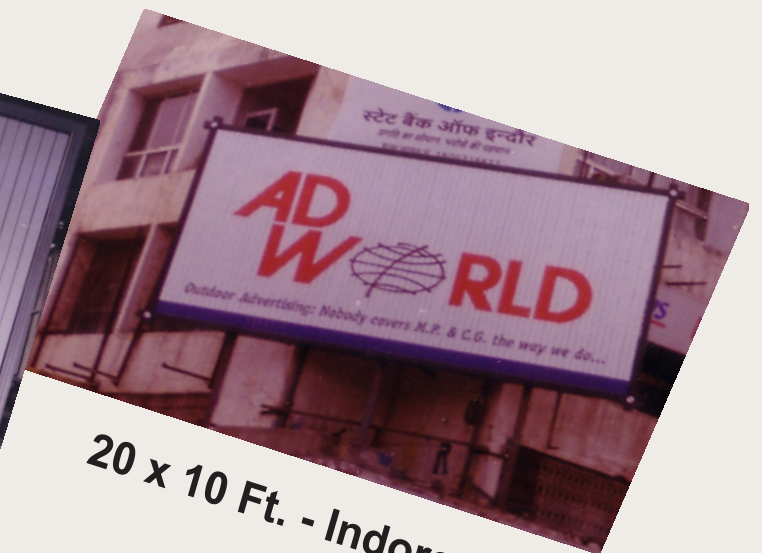
6 x 4 Ft. - Pune



3 x 2 Ft. - Mumbai



8 x 10 Ft. - Pune



20 x 10 Ft. - Indore

### Salient Features :

- The most economic & beneficial way of displaying 3 products thru one media.
- Suitable for indoor & outdoor application.
- Spring-loaded prism can be changed easily & quickly.
- Easy replacement of graphics.
- All components in drive mechanism are self lubricated special grade nylon.
- No need of lubrication / preventive maintenance.
- Made to match with available power source.
- Specially designed aluminium alloy extrusions used in frame & prism.
- Surface finish of the frame can be powder coated as per the required colour.
- Aesthetic appeal increased by maintaining a wave during prism rotation.
- Trivision can be made portrait / landscape.
- Prisms can be placed horizontal / vertical.

### Technical Specification:

- Overall size – from 3' x 2' to maximum 160' in width & 40' in height
- Graphics size – 6" less in width and height for smaller sizes & 12" for bigger sizes.
- Print Media - Self-adhesive printable vinyl.
- Prism – 2", 3", 4" or 6" aluminium alloy profile, depending on size of the trivision.
- Frame – 2.5", 3" or 6" aluminium alloyed profile, depending on size of the trivision.
- Depth – 3" to 9" max. depending on size. Higher the size more is the depth.
- Motors – 220V AC, 50 Hz, Panasonic Japan make motors are used normally.
- Consumption – 4 to 200 watt maximum.
- Control – Display time can be set through adjustable time controller.
- Optional Control – In case of power failure, the unit runs for 10 - 15 minutes with back up power & stops with a complete undisturbed message.



#### K B CORPORATION

A 15/105, Pritesh Ind. Complex, Val Village, Dapoda Road,  
Bhiwandi, Thane, Maharashtra - 421 302.

● **E-mail** : kbcopn@gmail.com ● **Website** : www.kbcorporation.net

● **Mob.:** 93233 51099 / 82860 51099